

CORAL TRACE

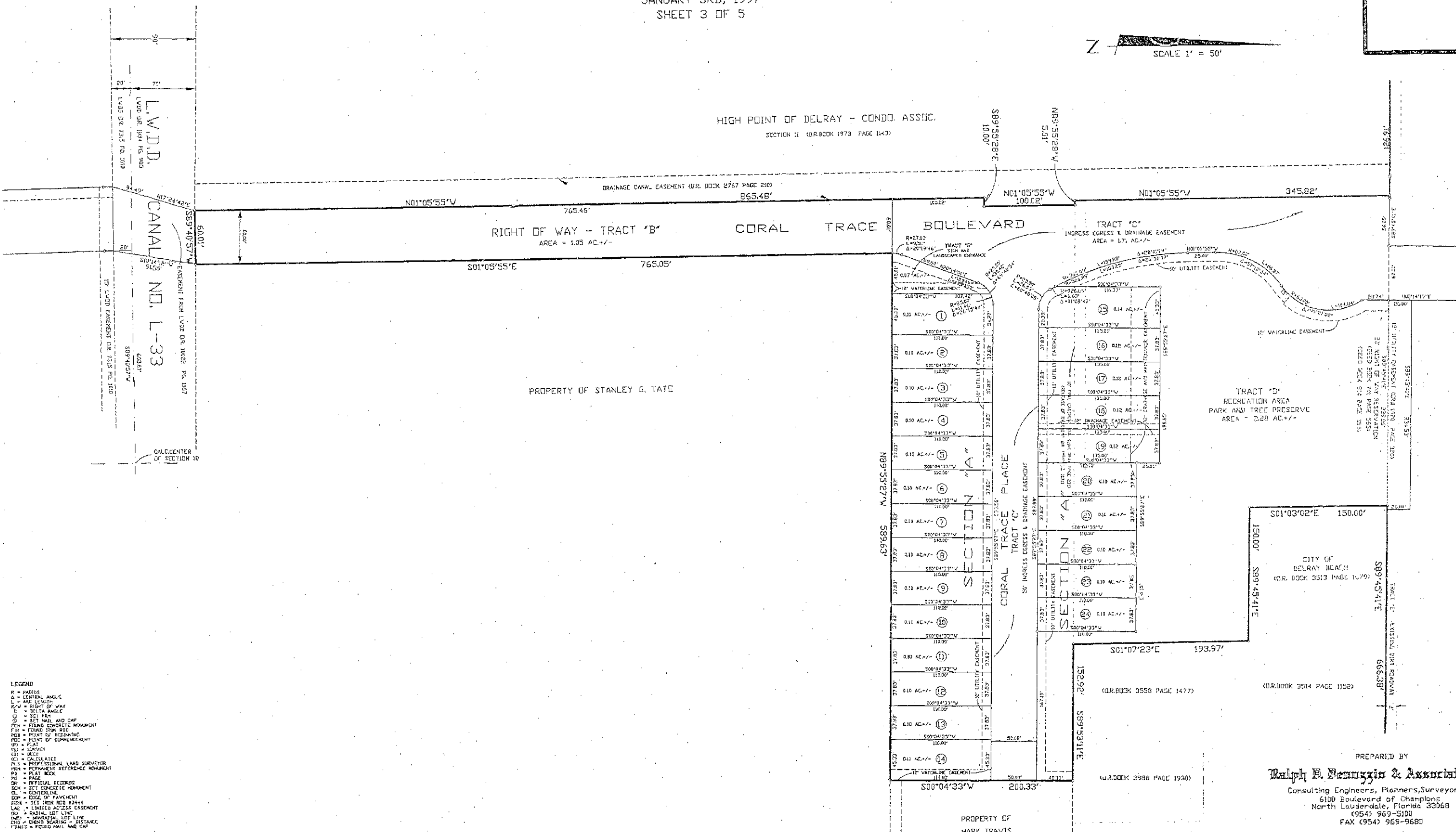
A PLAT OF A PORTION OF SECTION 18, TOWNSHIP 46 SOUTH, RANGE 43 EAST
CITY OF DELRAY BEACH
PALM BEACH COUNTY, FLORIDA

JANUARY 3RD, 1997
SHEET 3 OF 5



SEE SHEET NO. 2

SEE SHEET NO. 4



- LEGEND**
- R = RADIUS
 - Δ = CENTRAL ANGLE
 - L = LINE LENGTH
 - R/W = RIGHT OF WAY
 - ± = MEASUREMENT
 - ± = SET MAIL AND CAP
 - ± = SET MAIL AND CAP
 - ± = FOUND CONCRETE MONUMENT
 - ± = FOUND IRON ROD
 - ± = POINT OF BEGINNING
 - ± = POINT OF COMMENCEMENT
 - ± = P.M.T.
 - ± = SURVEY
 - ± = BEARINGS
 - ± = CALCULATED
 - ± = PROFESSIONAL LAND SURVEYOR
 - ± = PERMANENT REFERENCE MONUMENT
 - ± = PLAT BOOK
 - ± = PAGE
 - ± = OFFICIAL RECORD
 - ± = SET BENCH MARK
 - ± = SET BENCH MARK
 - ± = SET BENCH MARK
 - ± = LIMITED ACCESS EASEMENT
 - ± = RASAL LOT LINE
 - ± = MONUMENTAL LOT LINE
 - ± = CHECK BEARING - DISTANCE
 - ± = FOUND MAIL AND CAP

PREPARED BY
Ralph H. Benuzzio & Associates, Jr.
 Consulting Engineers, Planners, Surveyors
 6100 Boulevard of Champions
 North Lauderdale, Florida 33068
 (954) 969-5100
 FAX (954) 969-9680